



OPTIM 130-1000

Series for domestic and light commercial application used in houses, boiler feed, cooling towers, industrial applications, hotels and other processes.

- 5 cycle automatic valve
- softening media ion exchange strong cation resin
- separate brine tank
- high efficiency of hardness ion exchange
- corrosion resistant fiberglass tank
- regeneration and backwash fully automatic
- High technology valve
- Time or volumetric controller
- In volumetric controller available futures:
 - memory backup
 - time of each cycle programmable
 - measured and displayed flow rate
 - displayed capacity remaining in volume of water to resin exhausted



Valve LOGIX MAGNUM

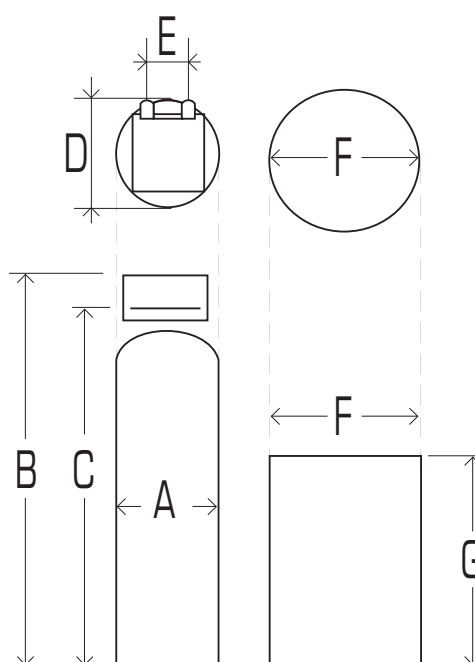
| MODEL | Ion capacity [°F x m ³] | Salt ⁽¹⁾ consumption [kg/ 1 reg.] | Flow rate nominal [m ³ / h] | Flow rate maximal [m ³ / h] | Pressure drop ⁽²⁾ [bar] | Resin volume [dm ³] | Salt tank volume [dm ³] |
|-------------------|--|--|--|--|--|---------------------------------------|---|
| OPTIM 130 | 520 - 910 | 10 - 29 | 3,2 | 5,2 | 0,1 | 130 | 140 |
| OPTIM 180 | 720 - 1260 | 14 - 40 | 4,5 | 7,2 | 0,2 | 180 | 190 |
| OPTIM 210 | 840 - 1470 | 17 - 46 | 5,3 | 8,4 | 0,3 | 210 | 340 |
| OPTIM 300 | 1200 - 2100 | 24 - 66 | 7,5 | 12 | 0,4 | 300 | 340 |
| OPTIM 500 | 2000 - 3500 | 40 - 110 | 12,5 | 20 | 0,6 | 500 | 460 |
| OPTIM 700 | 2800 - 4900 | 56 - 154 | 17,5 | 22 | 1,0 | 700 | 670 |
| OPTIM 1000 | 4000 - 7000 | 80 - 220 | 22 (25*) | 22 (40*) | 1,7 | 1000 | 920 |

Depends on used ion capacity

⁽²⁾ At nominal flow rate

(*) for side mount with optional aquamatic valve

| Common data | Value | units |
|---|-----------|-------|
| Connection inlet/outlet model 130 - 300 | 1,5 | cal |
| Connection inlet/outlet model 500 - 1000 | 2 | cal |
| Drain line connection | 1,5 | cal |
| Pressure min/max | 1,7 - 8,6 | bar |
| Max. temperature | 1 - 38 | OC |
| Power connection | 220/12 | V/AC |



| Dimensions MODEL | A - tank diameter [cm] | B - heigh [cm] | C - heigh to connections [cm] | D - deep [cm] | E - connect. distance [cm] | F - salt tank diameter [cm] | G - heigh salt tank [cm] |
|---------------------|------------------------------|-------------------|-------------------------------------|------------------|----------------------------------|-----------------------------------|--------------------------------|
| OPTIM 130 | 41 | 201 | 179 | 58 | 49 | 50 | 80 |
| OPTIM 180 | 49 | 201 | 179 | 60 | 49 | 50 | 108 |
| OPTIM 210 | 53 | 192 | 170 | 62 | 49 | 64 | 115 |
| OPTIM 300 | 61 | 212 | 190 | 66 | 49 | 64 | 115 |
| OPTIM 500 | 77 | 228 | 206 | 77 | 23 | 74 | 115 |
| OPTIM 700 | 93 | 236 | 214 | 93 | 23 | 89 | 115 |
| OPTIM 1000 | 110 | 260 | 238 | 110 | 23 | 104 | 115 |



H₂Optim Sp. z o.o. Sp. K.
Baranowo, ul. Poznańska 40
62-081 Przeźmierowo / Poznań, Poland

tel.: +48 61 8200 905, +48 61 8200 701, fax: +48 61 8244 051
 e-mail: biuro@h2optim.pl, www.h2optim.pl

OPTIM 130-1000