



Industrial Iron Filters

OPTIMO 100-205

Used in houses , hotels, restaurants, industrial and commercial applications, agriculture and others.

- Iron removal (to 20mg/l) and manganese removal (to 3m/l)
- Flow rate depend on inlet water parameters
- Filter media activated for iron and manganese removal
- Automatic backwash and fast rinse cycles
- Electronic or mechanical controllers

The filter consist of:

- Corrosion resistant fiberglass tank
- Filter media activated for iron and manganese removal
- 3 cycle valve controlled process of backwash, fast rinse and service



Valve LOGIX PERFORMA

MODEL	Filtration area [m ²]	Nominal Flow Rate [m ³ /h] at Filtration Rate ⁽¹⁾ [m/h]			Maximal Flow Rate ⁽²⁾ [m ³ /h]	Backwash Flow Rate ⁽³⁾ [m ³ /h]	Media Volume [dm ³]
		8	12	20			
OPTIMO 100	0,051	0,4	0,6	1,0	1,5	17 - 40	28
OPTIMO 120	0,086	0,5	0,8	1,5	1,7	28 - 60	44
OPTIMO 130	0,086	0,7	1,0	1,7	1,9	28 - 70	56
OPTIMO 140	0,099	0,8	1,2	2,0	2,5	33 - 80	84
OPTIMO 155	0,130	1,0	1,6	2,6	3,0	43 - 90	112
OPTIMO 175 *	0,164	1,3	2,0	3,3	4,0	55 - 90	168
OPTIMO 205 *	0,223	1,8	2,7	4,5	5,0	74 - 90	196

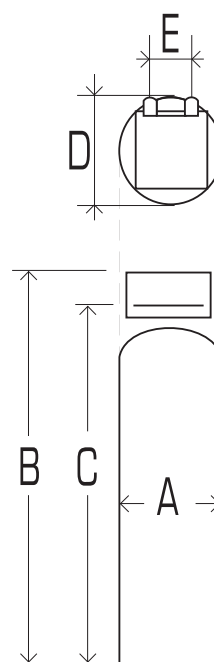
* only side mounted with additional Aquamatic valves (high backwash rate)

⁽¹⁾ choose Filtration Rate base on water quality and filter media

⁽²⁾ max periodic flow rate at $\Delta p = 1,5$ bara

⁽³⁾ depend on filter media

Common data	Value	Units
Connection - inlet / outlet	1	cal
Drain line connection	3/4	cal
Pressure min / max	2 - 8	bar
Max. temperature	1 - 38	°C
Power connection	220/12	V/AC



Dimensions MODEL	A - tank diameter [cm]	B - heigh [cm]	C - heigh to connections [cm]	D - deep [cm]	E - connect. distance [cm]
OPTIMO 100	26	157	147	41	12,7
OPTIMO 120	34	130	120	41	12,7
OPTIMO 130	34	157	147	41	12,7
OPTIMO 140	36	192	182	41	12,7
OPTIMO 155	41	192	182	42	12,7
OPTIMO 175	49	192	182	49	12,7
OPTIMO 205	53	183	173	53	12,7



H2Optim Sp. z o.o. Sp. K.
Baranowo, ul. Poznańska 40
62-081 Przeźmierowo / Poznań, Poland

tel.: +48 61 8200 905, +48 61 8200 701, fax: +48 61 8244 051
 e-mail: biuro@h2optim.pl, www.h2optim.pl